

KD-Validated Anti-NFKBIE Rabbit Monoclonal Antibody
Rabbit monoclonal antibody
Catalog # AGI2290**Specification****KD-Validated Anti-NFKBIE Rabbit Monoclonal Antibody - Product Information**

Application	WB
Primary Accession	O00221
Reactivity	Human
Clonality	Monoclonal
Isotype	Rabbit IgG
Calculated MW	Predicted, 53 kDa; observed, 42-48 kDa
Gene Name	KDa
Aliases	NFKBIE NFKBIE; NFKB Inhibitor Epsilon; IKBE; NF-Kappa-B Inhibitor Epsilon; Nuclear Factor Of Kappa Light Polypeptide Gene Enhancer In B-Cells Inhibitor, Epsilon; I-Kappa-B-Epsilon; IkappaBepsilon; NF-Kappa-BIE; Ikb-Epsilon; Ikb-E
Immunogen	A synthesized peptide derived from human NFKBIE

KD-Validated Anti-NFKBIE Rabbit Monoclonal Antibody - Additional Information

Gene ID	4794
Other Names	
NF-kappa-B inhibitor epsilon, NF-kappa-BIE, I-kappa-B-epsilon, Ikb-E, Ikb-epsilon, IkappaBepsilon, NFKBIE, IKBE	

KD-Validated Anti-NFKBIE Rabbit Monoclonal Antibody - Protein Information**Name** NFKBIE**Synonyms** IKBE**Function**

Sequesters NF-kappa-B transcription factor complexes in the cytoplasm, thereby inhibiting their activity (PubMed:[9315679](http://www.uniprot.org/citations/9315679)). Sequestered complexes include NFKB1-RELA (p50-p65) and NFKB1-REL (p50- c-Rel) complexes (PubMed:[9135156](http://www.uniprot.org/citations/9135156), PubMed:[9315679](http://www.uniprot.org/citations/9315679)). Limits B-cell activation in response to pathogens, and also plays an important role in B-cell development (By similarity).

Cellular Location

Cytoplasm.

Tissue Location

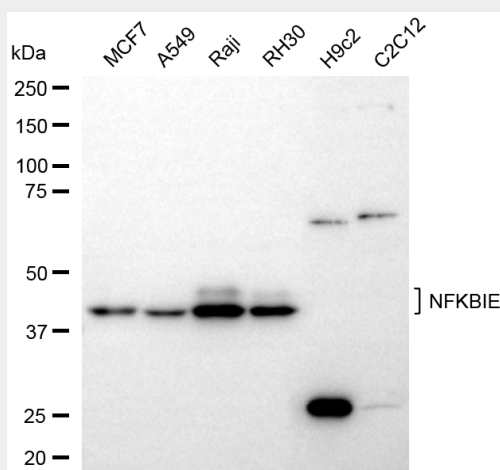
Highly expressed in spleen, testis and lung, followed by kidney, pancreas, heart, placenta and brain. Also expressed in granulocytes and macrophages

KD-Validated Anti-NFKBIE Rabbit Monoclonal Antibody - Protocols

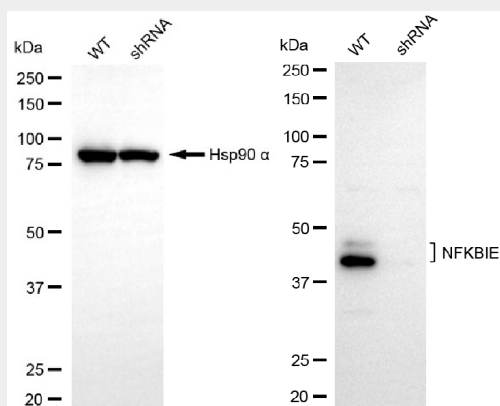
Provided below are standard protocols that you may find useful for product applications.

- [Western Blot](#)
- [Blocking Peptides](#)
- [Dot Blot](#)
- [Immunohistochemistry](#)
- [Immunofluorescence](#)
- [Immunoprecipitation](#)
- [Flow Cytometry](#)
- [Cell Culture](#)

KD-Validated Anti-NFKBIE Rabbit Monoclonal Antibody - Images



Western blotting analysis using anti-NFKBIE antibody (Cat#AGI2290). Total cell lysates (30 µg) from various cell lines were loaded and separated by SDS-PAGE. The blot was incubated with anti-NFKBIE antibody (Cat#AGI2290, 1:5,000) and HRP-conjugated goat anti-rabbit secondary antibody respectively.



Western blotting analysis using anti-NFKBIE antibody (Cat#AGI2290). NFKBIE expression in wild-type (WT) and NFKBIE shRNA knockdown (KD) HeLa cells with 30 µg of total cell lysates.

Hsp90 α serves as a loading control. The blot was incubated with anti-NFKBIE antibody (Cat#AGI2290, 1:5,000) and HRP-conjugated goat anti-rabbit secondary antibody respectively.